



Meet the Teacher- Year 6
Mrs McCormack, Mrs Bean, Miss Desai and Mrs Fade

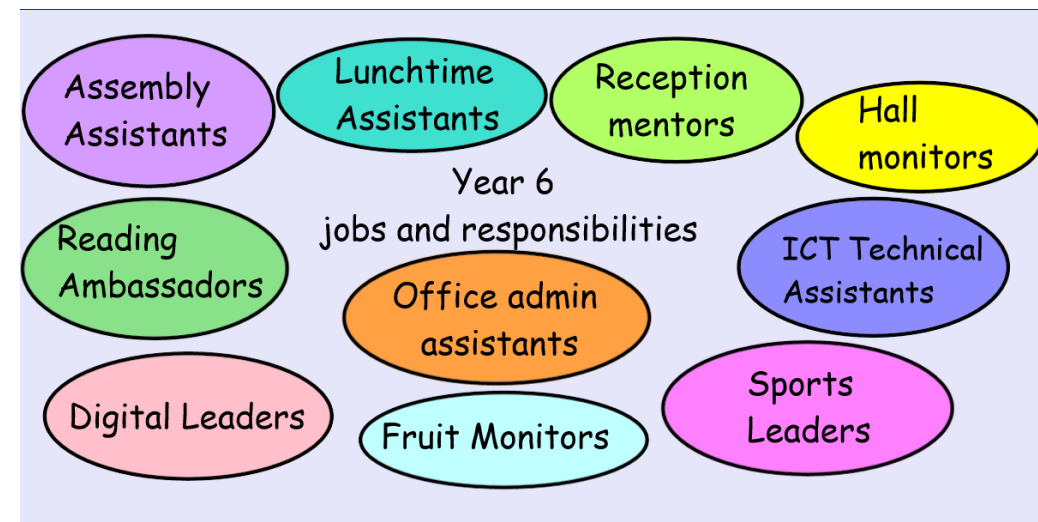
Year 6... the best year!



Year 6 is a busy but hopefully an extremely enjoyable and fulfilling year for the children at Stratford Primary.

As well as being mindful of the demands of SATs, it is about preparing the children for the transition to secondary school. We will encourage the pupils to be more self-reliant and self-sufficient and to take on more of the responsibility for their own learning and progress.

The children will also be encouraged to take on roles of monitoring and support duties with younger pupils and take on responsibilities both in the classroom and around the school as 'top of the school'.



A Typical Day in Year 6...



Doors open at 8:40am. A typical day in Year 6 is fast paced and action packed!

Children arrive at school, put their belongings away in their lockers and settle down quietly to complete their early morning activities during registration time – Fluent in Five and Colour Monster. They then move straight into morning lessons, which are the core subjects: English (reading, writing and SPAG) and Maths.

Lunch – often filled with jobs!

The afternoon consists of Theme-based learning through the foundation subjects, for example Art, Science, Computing, Geography, History, French etc. The day will end with assemblies and a whole class story.

Throughout the week, the children have daily reading opportunities. The main teaching of reading takes place through the whole class reader, which allows the children to become immersed in a quality text, and to develop their reading skills, such as inference and understanding of vocabulary.

Year 6 Timetable...



YEAR 6 TIMETABLE

Autumn 1

	Registration 8.45-9.00	Reading/ Assembly 9.00-9.30	Lesson 1 9.30-10.30	Break 10.30-10.50	SPAG 10.50-11.10	Lesson 2 11.10-12.00	Lunch 12.00-1.00	Afternoon Session 1.00-2.00	Afternoon Session 2.00-2.55	School Day end 3.25pm 2.55-3.20
M	Fluent in Five 	WHOLE SCHOOL ASSEMBLY 	Maths 	Break Healthy snack brought in. Sweets/choco late NOT permitted in school	Spelling 	English 	Lunch Children may bring own packed lunch or purchase school meal Sweets NOT permitted in school	Computing 	Geography/History 	DEAR
T	Fluent in Five 	Whole Class Reading 	Maths 	Break Healthy snack brought in. Sweets/choco late NOT permitted in school	SPAG 	English 	Lunch Children may bring own packed lunch or purchase school meal Sweets NOT permitted in school	Art/DT 	Music 	In the News Assembly DEAR
W	Fluent in Five 	Whole Class Reading 	Maths (Mrs Fade) 	Break Healthy snack brought in. Sweets/choco late NOT permitted in school	Spelling 	English (Mrs Fade) 	Lunch Children may bring own packed lunch or purchase school meal Sweets NOT permitted in school	PE (Mrs Fade) 	RE/PSHE (Mrs Fade) 	Singing Assembly
T	Fluent in Five 	Whole Class Reading 	Maths 	Break Healthy snack brought in. Sweets/choco late NOT permitted in school	SPAG 	English 	Lunch Children may bring own packed lunch or purchase school meal Sweets NOT permitted in school	Science (laptops 1-2) 	MFL (French) 	Whole School Reading Assembly
F	Fluent in Five 	Whole School Assembly 	Maths 	Break Healthy snack brought in. Sweets/choco late NOT permitted in school	Spelling 	English 	Lunch Children may bring own packed lunch or purchase school meal Sweets NOT permitted in school	Extra Theme Session – Science, Geography, History, Art/DT	PE 	DEAR

Our Creative Learning Themes...



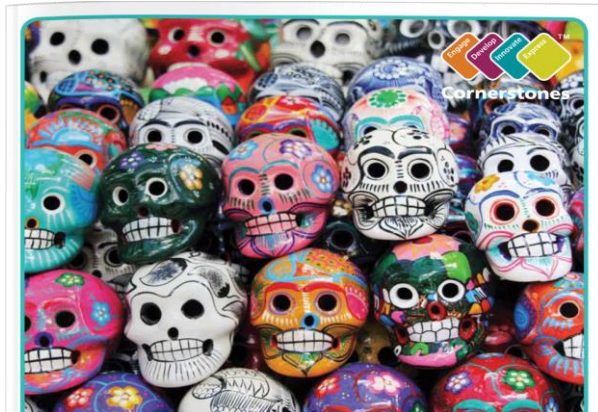
Islands of Evolution



Britain at War



Frozen Kingdom



Hola Mexico

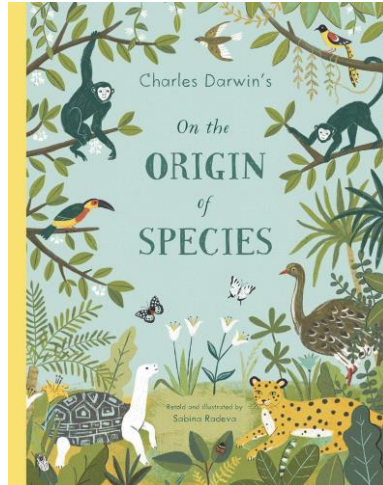
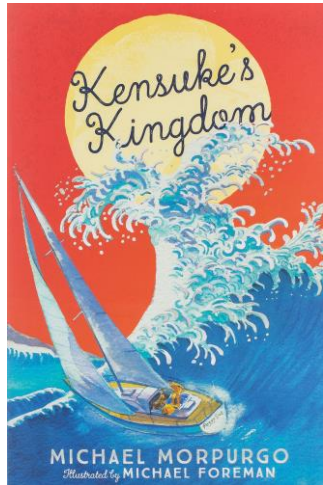


Gallery Rebels

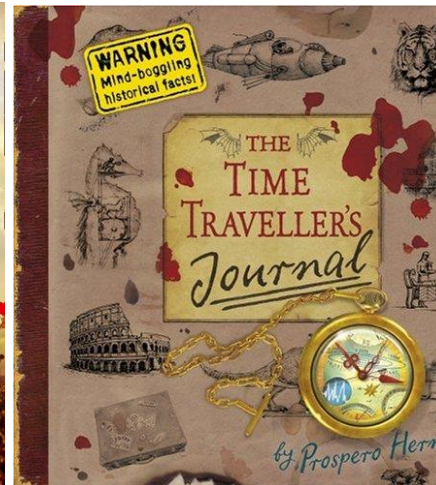
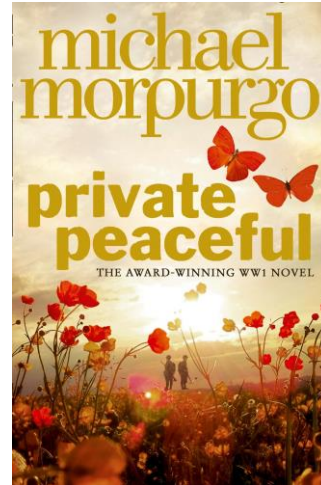
Key Texts...



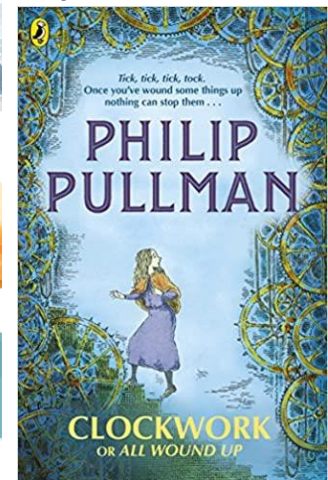
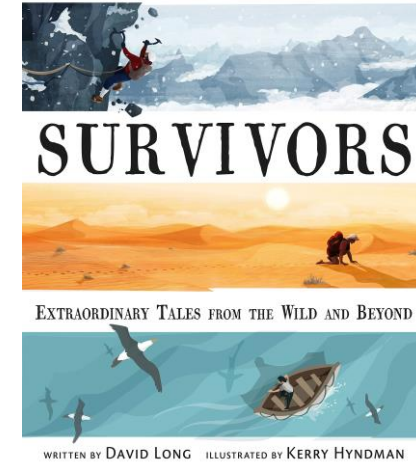
Islands of Evolution



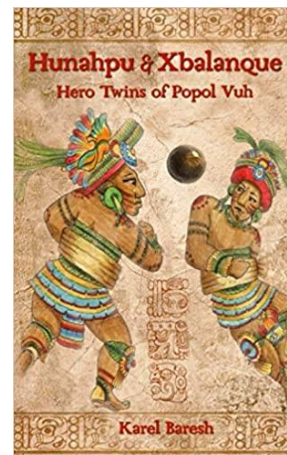
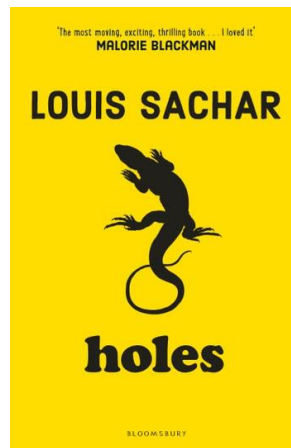
Britain at War



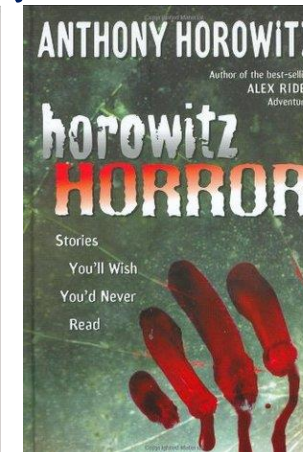
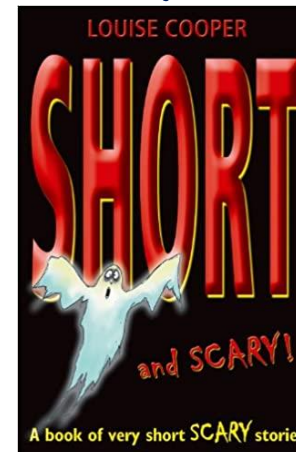
Frozen Kingdom



Hola Mexico



Gallery Rebels



Trips and visitors ...



This year, we have tried to think of how we can further enhance the curriculum and the children's learning through trips and experiences at as low a cost as possible, especially as we have the costly residential in July.

Here are the planned/potential experiences for the year ...

WWI soldier visit – Monday 6th November in school – cost approx. £15

KS2 Theatre visit – December – date and cost TBC

Survival Day in the Paddock – March – no cost

Graffiti Workshop – June – cost TBC but subsidised by FOSP

Manor Adventure – Monday 1st to Friday 5th July 2024 – cost £495

How we assess the children...



Assessment in KS2 is carried out daily, using a range of strategies, such as quick quizzes, 5-a-day questions, live marking and targeted questioning. This is to ensure that teachers can keep a close track on children's learning and understanding, so that children can respond to feedback and to ensure that any misconceptions are quickly addressed.

Throughout the year, children will also take part in more formal assessments in reading, writing and maths to help us judge attainment and understanding; to inform us of next steps; and to help identify any gaps in learning, so we can put interventions in place.

In May (dates will be shared later), the children will sit the statutory KS2 National Curriculum assessments, in Reading, GPS and Maths. They will receive results which state their raw score and whether they have met the Expected Standard for the end of Year 6. Writing is based on teacher assessment.

Home Learning...



As Year 6, the children will be expected to complete English and Maths homework each week. English will comprise of spelling and reading; Maths will comprise of Times Tables Rock Stars and after Christmas, a class work consolidation task.

We strongly encourage home reading in order to support the skills the children are developing in class and, most importantly, for enjoyment, and we expect the children to have a book that they are reading both in school and at home regularly. We will keep a record of these in their Reading Journals (in school).

Spellings will be taught weekly and the children will be encouraged to practise these on Spelling Shed. Games will be set to practise the words being focused on during the week in school. These will be set on a Monday.

In Maths, the children will be given KIRFs (Key Instant Recall Facts) for the half term.

These will outline the facts that the children are required to know and give ideas and strategies for practising these. This half term, the focus is on times tables and knowing the multiplication and corresponding division facts for all tables up to 12×12 . They will also be set 30 minutes of Times Table Rock Stars practice per week.

Communication...



Timetable and letter to parents

YEAR 6 TIMETABLE											
Autumn 1											
	Registration Assembly	Lesson 1	Break	SPAG	Lesson 2	Lunch	Prayers in Prep	Afternoon Session	Afternoon Session	Prayers in Prep	Dismissal
M	Whole School Assembly	Maths	Break	Spelling	English	Lunch	Prayers in Prep	Geography/History	Music	Prayers in Prep	Dismissal
T	Whole Class Reading	Maths	Break	SPAG	English	Lunch	Prayers in Prep	Computing	Art/DT	Prayers in Prep	Dismissal
W	Whole Class Reading	Maths (Mrs Fide)	Break	Spelling	English (Mrs Fide)	Lunch	Prayers in Prep	PE (Mrs Fide) (1.15 - 2.05)	REPSHE (Mrs Fide)	Prayers in Prep	Dismissal
T	Whole Class Reading	Maths	Break	SPAG	English	Lunch	Prayers in Prep	Science (Steps 1-3)	PE (Mrs Fide)	Prayers in Prep	Dismissal
F	Prayers in Prep	Maths	Break	Spelling	English	Lunch	Prayers in Prep	PE (1-2)	Relax Kids (2.05 - 2.55) PSHE	Prayers in Prep	Dismissal

eSchools – home learning, messages and class page



Twitter

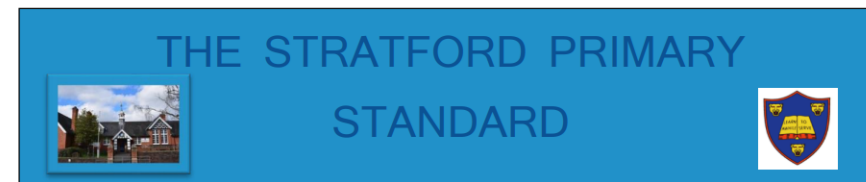


Parents Consultations

OCTOBER 2023

Sunday	Monday	Tuesday	Wednesday	Thursday	Friday	Saturday
1	2	3	4	5	6	7
8	9	10	11	12	13	14
15	16	17	18	19	20	21
22	23	24	25	26	27	28
29	30	31				

Weekly News Letter



A NOTE FROM MRS HUMPHRISS



Welcome back everyone. We all hope you had a wonderful summer holiday together. The children have really impressed me with how they have returned to school. They have settled in well and the school is a happy, calm place. I am particularly impressed by our Reception children who have great listening skills and are enjoying exploring a revamped classroom. We have new carpets in school which have brightened up the corridors and the staff are very excited by their newly decorated and re-designed staffroom. It is important that our staff have a place to relax and be social. It has been lovely to see everyone at our Meet the Teacher sessions and this term we have many things for you all to look forward to. Don't forget to check out our website for information and calendar dates and our new Instagram page where you can see short videos of the school. I look forward to seeing many of you at future events.

'Remember just one small positive thought can change your whole day.'

Communication...



We are always here to support and listen. You may come and talk to us at the end of the school day; you can also send a message on eschools through your child's account, or through your own parent account. If it is urgent please email the school office and this will be forwarded to me.

Important issues can be spoken about in person and appointments with teachers can either be made directly through teachers or via the school office.

Serious injuries and head injuries will be communicated via a phone call home. Minor injuries such as cuts and grazes will be communicated via Accident forms which are given out at the end of the day.

Please check eschools for general class messages.

Additional Support/Concerns...



The DSL team are always welcoming and can support you with your concerns.



Mrs Gill Humphriss
Designated Safeguarding Lead



Mrs Anna Slater
Deputy Designated Safeguarding Lead



Ms Tracey Parton
Deputy Designated Safeguarding Lead



Mrs Lisa Chisholm
Deputy Designated Safeguarding Lead

You can email or phone - contact information is available on the website.

Social Media

Expectations...



Behaviour – high expectations, in class, in the playground, moving around school, on educational visits, when visitors are in and during after school clubs. Class Contract and One School Rule: RESPECT

School uniform / PE kit / Lost Property – LABEL!



Presentation, in school and when completing homework – end of Year 6 expected standard (neat, joined, legible, fluent) and sense of pride in books.



Encourage independence – knowing what they need each day!

Named water bottle needs to be in school every day.

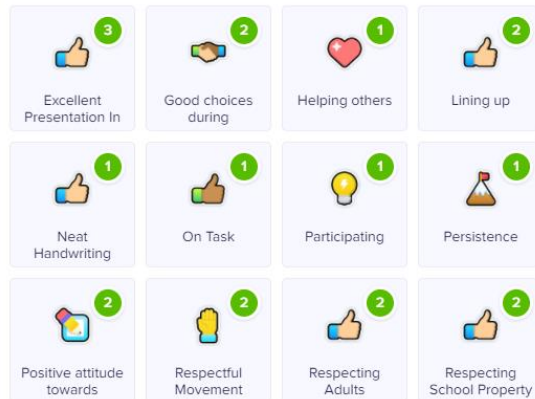
Celebrating Success...



Weekly certificates in celebration assembly – Headteacher's award, Learner of the Week and Well-being Warriors. We will also have weekly awards celebrating TTRS achievements

Topic Sharing Events, the website and Twitter

Stickers, Dojo points, House Points and Respect certificates



Shakespeare Arden Hathaway Hall

Year 6 dates ...



SATS WEEK

Monday 13th May – Thursday 16th May 2024 (PAST PAPERS)



Y5 AND Y6 PRODUCTION
June 2024



Manor Adventure WEEK

Monday 1st - Friday 5th July 2024



LEAVERS' ASSEMBLY
Friday 19th July 2024



AOB...



Remind children at home they have a locker in which to store their items,
encourage that independence

Healthy snacks

PE Kit on Wednesday and Friday.

Mobile Phones – letter and policy

Walking Home – let the office know if any changes

Road Safety

Behaviour when walking to/from school

Any Questions?



Thank you!