



THE STRATFORD PRIMARY STANDARD



NOTES FROM THE DESK OF MRS SLATER



How lovely to have the sun shining for us at last! It arrived just in time for the Reception visit to the farm on Wednesday, where we met and learned about lots of interesting animals - tarantulas, stick insects, guinea pigs, rabbits, alpacas and ostrich to name just a few! Last week, I spent time with leaders from the Playmaking Festival, exploring drama techniques that Year 3 will be learning for their performance of Hamlet with the Stratford Schools Project in July. I have also been fortunate enough to have a sneak preview of the singing for the end of year performance from Year 5 and Year 6 - mostly tuneful and certainly entertaining! It has been a pleasure to have had lots of children bringing their quality pieces of writing to show me this week - beautifully presented, lovely ideas and a genuine joy to read, I am running out of stickers at this point! What a treat, too, to listen to Year 1 and Year 2 children reading to Bobby, our therapy dog, in the library this week. He was listening very intently and certainly had a calming impact on me. It has been a lovely, positive week - keep up the good work everyone!

Dates for your diary

Maths Challenge

Answer to last challenge

Process of induction.

*The number of socks
required to be certain of
finding P is $2p + 3$*

5 matching pairs is

$$2 \times 5 + 3 = 13$$

Read -

https://mathschallenge.net/full/unordered_socks

13th May - KS2 Statutory Assessments

16th May - Y5 Fire Service Visit

20th May - Y5/6 Pentathlon event

21st May - Class Photo Day/Y5 & 6 Big Sing Warwick

22nd May - Y1 Fire Service Visit

24th May - Celebration assembly and 'Yes' day - FOSP event

Half term holiday - return to school Monday 3rd June

3rd June - Multiplication statutory testing starts

7th June - Grounds Day and Plant walks

10th June - Phonics screening for Year 1 begins

13th June - New Reception Parent meeting

14th June - Celebration Assembly/CAT football tournament

17th June - New Reception Stay & Play Grp 2

18th June - Y3/4 Athletics, New Reception Stay & Play Grp 2/Y5 & 6 Play

STAY SAFE IN A DIGITAL WORLD

Get smart about smartphones

Advice for parents and carers



We know it can be tough to stay on top of children's smartphone use, especially if they are just starting their digital journey.

So, internet matters has put together simple but practical things you can do today to take action and keep them safe.

<https://www.internetmatters.org/setup-safe/>

SAFEGUARDING - EVERYONE'S RESPONSIBILITY

EACH WEEK WE WILL SHARE SAFEGUARDING MESSAGES HERE FOR YOU

EVERY CHILD HAS THE RIGHT TO BE SAFE, HEALTHY AND WELL.

Gambling

Whilst children should not be gambling, many are already placing bets at school or buying virtual loot boxes. Start a conversation about gambling and how to keep themselves safe and healthy. Talk about the risks imposed by non-casino games like scratchcards or gaming. Tell them about the hidden side of gambling such as piling up debts, skipping classes or work. Let them learn from you. If you talk about responsible gambling and have a plan to protect yourself then they will too.

<https://www.responsiblegambling.org/for-the-public/safer-play/how-to-talk-to-your-kids-about-gambling/>



Subject Spotlight – Music

We love music at Stratford upon Avon. We love to sing, dance, listen and create. We currently follow the Charanga scheme which exposes children to whole range of different genres of music, teaches them about the rudiments of music and helps them to learn simple instruments such as recorder or glockenspiels.

The National Curriculum for music aims to ensure that all children:

- perform, listen to, review and evaluate music
- be taught to sing, create and compose music
- understand and explore how music is created, produced and communicated

At Stratford upon Avon Primary School, children gain a firm understanding of what music is through listening, singing, playing, evaluating, analysing, and composing across a wide variety of historical periods, styles, traditions, and musical genres. We are committed to developing a curiosity for the subject, as well as an understanding and acceptance of the validity and importance of all types of music, and an unbiased respect for the role that music may wish to be expressed in any person’s life. We are committed to ensuring children understand the value and importance of music in the wider community and are able to use their musical skills, knowledge, and experiences to involve themselves in music, in a variety of different contexts.

We hold weekly singing assemblies, various concerts and performances, and we also work with Warwickshire Music service who provide peripatetic lessons in piano, guitar, flute, clarinet and violin.

The children also have the opportunity to take part in singing events as part of the community to showcase their talents. This year our Year 4 class have been our choir and gone out and about singing. They are soon to perform at The Royal Albert Hall which is an incredible opportunity.

Twice a week, Rock Steady Music Academy visit Stratford Primary. They work with over 40 children who have formed mini rock bands and learnt to play guitar, drums, keyboard and sing. They perform every term.

The elements of music are taught in the classroom lessons so that children are able to use some of the language of music to dissect it, and understand how it is made, played, appreciated and analysed. In the classroom children learn key aspects of music through cross-curricular links. They also learn how to compose, focusing on different dimensions of music, which in turn feeds their understanding when listening, playing, or analysing music. Composing or performing using body percussion and vocal sounds is also part of the curriculum, which develops the understanding of musical elements without the added complexity of an instrument.



Stratford Upon Avon Primary School
KS1 and KS2 Progression of Skills – Music – Skills, Knowledge and Understanding
 Based on the National Curriculum for KS1 and KS2

| | Reception | Year 1 | Year 2 | Year 3 | Year 4 | Year 5 | Year 6 |
|---------------------------------------|--|--|--------|--|--------|--------|--------|
| Age related statutory coverage | Expressive Arts and Design Exploring and using media and materials 40-60 months Begins to build a repertoire of songs Explores the different sounds of instruments ELG Children sing songs, make music. Being Imaginative ELG They represent their own ideas, thoughts and feelings through music. | Use voices expressively and creatively by singing songs and speaking chants and rhymes Play tuned and untuned instruments musically Listen with concentration and understanding to a range of high quality live and recorded music Experiment with, create, select and combine sounds using the interrelated dimensions of music. | | Play and perform in solo and ensemble contexts, using their voices and playing musical instruments with increasing accuracy, fluency, control and expression Improvise and compose music for a range of purposes using the interrelated dimensions of music Listen with attention to detail and recall sounds with increasing aural memory Use and understand staff and other musical notations Appreciate and understand a wide range of high-quality live and recorded music drawn from different traditions and from great composers and musicians Develop an understanding of the history of music. | | | |





General Assistant Vacancy – Stratford Primary School

We are looking for a General Assistant to work within our Catering Division at Stratford Primary School based in Stratford Upon Avon.

The successful candidate will be cheerful and organised and will work well as part of the school community.

Duties include lunch production, serving pupils, allergy management, cleaning duties and due diligence – liaising with the Client and managing Stock Control to hit relevant budget constraints.

The position is subject to an enhanced DBS check and Safer Recruitment interview questions.

20 hours a week. Monday to Friday, term time only.

Experience in a similar role would be an advantage, but a flexible approach with a positive attitude and a smile is what we are looking for.

If this is of interest to you or you have any questions please contact – thomas.bray@sodexo.com



Information in and around our community

For Secondary School Entry in 2025 – 11+

Registration for the 11+ opens on 7 May each year for those children currently in Year 5. Candidates must register by the deadline of 30 June. Testing sessions for these candidates are then scheduled to take place in September, when they have just started in Year 6.

Applicants for 2025 entry should [create or log in to a Parent Portal account](#) from 7 May 2024 onwards and submit the online 11+ registration form that will be available underneath the relevant child's details on the account. An automatic email will be sent to the email address associated with the Parent Portal account confirming submission, once it has been completed successfully.

If your child has any special educational needs and/or medical issues that we need to be aware of, or that you feel may impact them on the day of the test, then please complete the specific testing arrangements form and return it to elevenplus@warwickshire.gov.uk once you have completed your registration. You may also want to submit any relevant medical evidence for the panel of trained professionals to consider.

Warwickshire's 2025 entry 11+ testing schedule

| Date | Milestone |
|--------------------------|---|
| 7 May 2024 | 11+ entrance test opening date |
| 30 June 2024 | 11+ entrance test deadline |
| 30 June 2024 | 11+ special arrangements application deadline, including submissions of supporting evidence |
| W/C 15 July 2024 | Decision letters for access arrangements distributed |
| W/C 12 August 2024 | Invite letters to 11+ test distributed |
| 14 and 15 September 2024 | 11+ test dates |
| 18 October 2024 | Results available on Parent Portal |
| 31 October 2024 | Secondary 2024 application deadline (applications by your home local authority) |
| W/C 2 December 2024 | Proof of address (mandatory) to be sent to poa@warwickshire.gov.uk . Please see each school's arrangements for accepted proof of address (1 proof for parent, 1 proof for child) |
| 31 December 2024 | Proof of address deadline |
| 1 March 2025 | National Offer Day |



MAY HALF TERM Free Workshops for Families

With Stratford Town Trust
Community Hub

Tuesday, 28th May, 10 - 11:30am

Meet at The Crowne Plaza

Nature Reserve Activity

Explore Stratford-upon-Avon's very own nature reserve and join the search for mini beasts

Suitable for 5 -12 year olds (siblings welcome)
refreshments available



Wednesday, 29th May, 10 - 12am

At The Community Hub, Venture House.

Lucy Cooke Mosaics

Join Lucy to design and make attractive, fish themed mosaics

Suitable for 5 -12 year olds (siblings welcome)
refreshments available

Early booking is essential

email: communityhub@stratfordtowntrust.co.uk
or call 01789 295011

Stratford Town Trust Community Hub, Venture House,
Avenue Farm Industrial Estate, CV37 0HR

www.stratfordtowntrust.co.uk



**Pos ability
not
Dis ability**

CREATIVE & INNOVATIVE OPPORTUNITIES FOR ALL



Footy, Fun and Friendship!

ILEAP Charity, Fitt 4 Kids and
Wellesbourne Sports + Community Centre
have teamed up to give young people with
Additional Needs the chance to have fun, play
footy and make new friends!!

Venue: Wellesbourne Sports and Community Centre

Day: Every Friday during term time

Summer term dates:

12th April - 19th July 2024 (no session 31st May)

Time: 5.00pm - 6.00pm (6-12 years)

Please bring a drink and dress for the weather.

Cost: Just £2.50 per session

(book for the term to receive free astro boots
and a team footy shirt)



Join and book now at
www.ileap.co.uk



Attendance, Houses & More



House Points

Two weeks worth hence the large numbers

Hall 2325

Hathaway 2217

Shakespeare 2465

Arden 2831



This week's winners are:

Y4 - awesome

Y1, 2 and 5

Attendance figures

Reception = 96%

Year One = 98%

Year Two = 98%

Year Three = 96%

Year Four = 100%

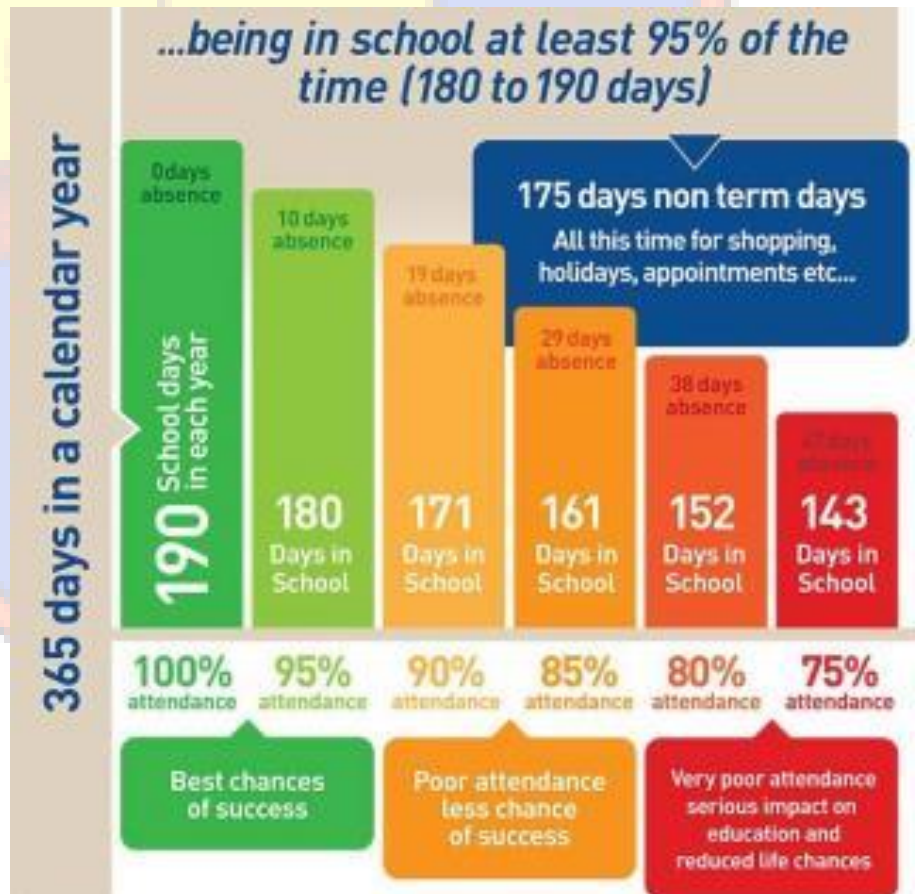
Year Five = 98%

Year Six = 95%

Whole school attendance for this year so far is:

96%

Attendance letters have gone out this week. We are required to keep you informed of your child's attendance. Attending school is important. For every day missed it impacts on your child's life chances. We understand children get ill. Remember learning is important for future careers.



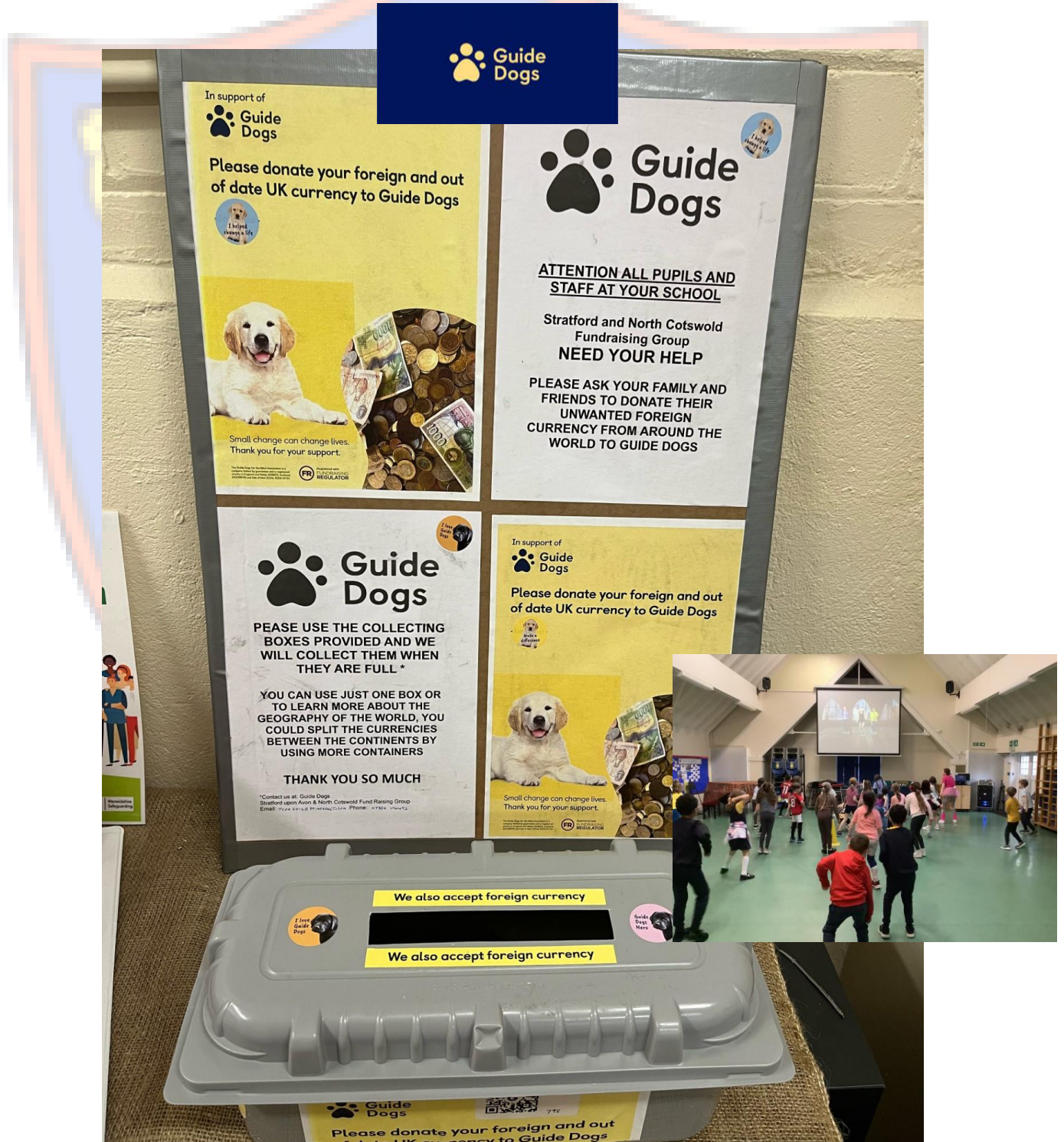
GUIDE DOGS FOR THE BLIND - OUR CHOSEN CHARITY

THANK YOU SO MUCH FOR YOUR DONATIONS FOR GUIDE DOGS FOR THE BLIND.

Our final tally for donations was £276.85

We have a new collection box in our front office. You can donate your unwanted foreign coins.

Help us raise even more money for this worthy cause.



PLAY IN A DAY

Tuesday 28th May

Rehearse and perform an adaptation of
Macbeth in one day.



Age: 7-11

Price: £35

Venue: Radford Road Church, Leamington

Timings: 9am - 4.30pm (performance at 4pm)

For more information, call 07860508210 or email
hello@rachelwintersshakespeareworkshops.co.uk